

Installation Guide

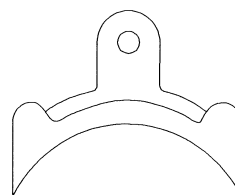
Required Tools

- digital voltmeter
- small phillips screwdriver
- small flatblade screwdriver

Mounting

1. Remove the cover
2. Using the three 3/16" diameter openings, (see diagram below) mount the case flush against the ductwork, or any flat surface.
2. Install the sensing capillary in a horizontal serpentine fashion across the leaving side of a water coil.
3. Support the sensing capillary to prevent damage from vibration and/or air movement. (KMC suggests Capillary Clip HMO-4523, sold separately).

HMO-4523
CAPILLARY CLIP



Wiring and Adjustments

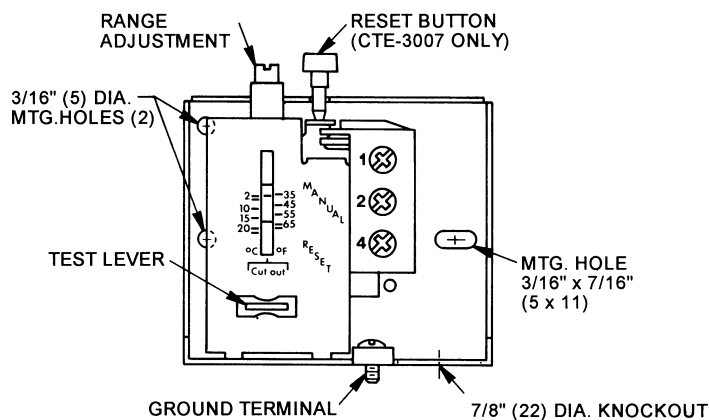
Refer to the wiring diagram before making connections.

The setpoint is the temperature at which contacts "1" and "4" will open as the unit senses a fall in temperature.

To adjust the setpoint:

- Turn the range adjustment screw CW to decrease the setpoint.
- Turn the range adjustment screw CCW to increase the setpoint.

The test lever allows the unit to be manually actuated during system checks.



Maintenance

No routine maintenance is required. Each component's design and manufacture assures dependable long-term reliability and performance.

KMC Controls

P.O. Box 497
19476 Industrial Drive
New Paris, IN 46553
U.S.A.

TEL: 574.831.5250

FAX: 574.831.5252

E-mail: info@kmccontrols.com