

KMD-5540-001 Carrier DataPort Interface

Issued 10 March 2006

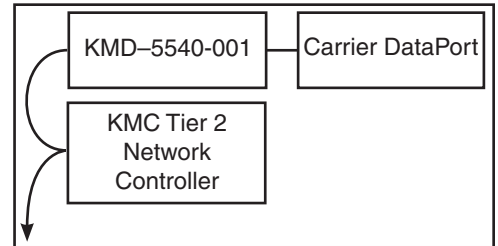
Issue

Setup and configuration of the KMD-5540-001 Carrier DataPort Interface.

Instructions

This version of the KMD-5540 Series CommTalk is designed to serve as a communications interface between a KMC Tier 2 network controller (such as a KMD-5500/5800/6000/7000) and a Carrier DataPort system device.

NOTE: The Carrier DataPort must be set at **9600 baud** to communicate with the KMD-5540-001. Also, WinControl XL or WinControl XL Plus is required to configure the interface.

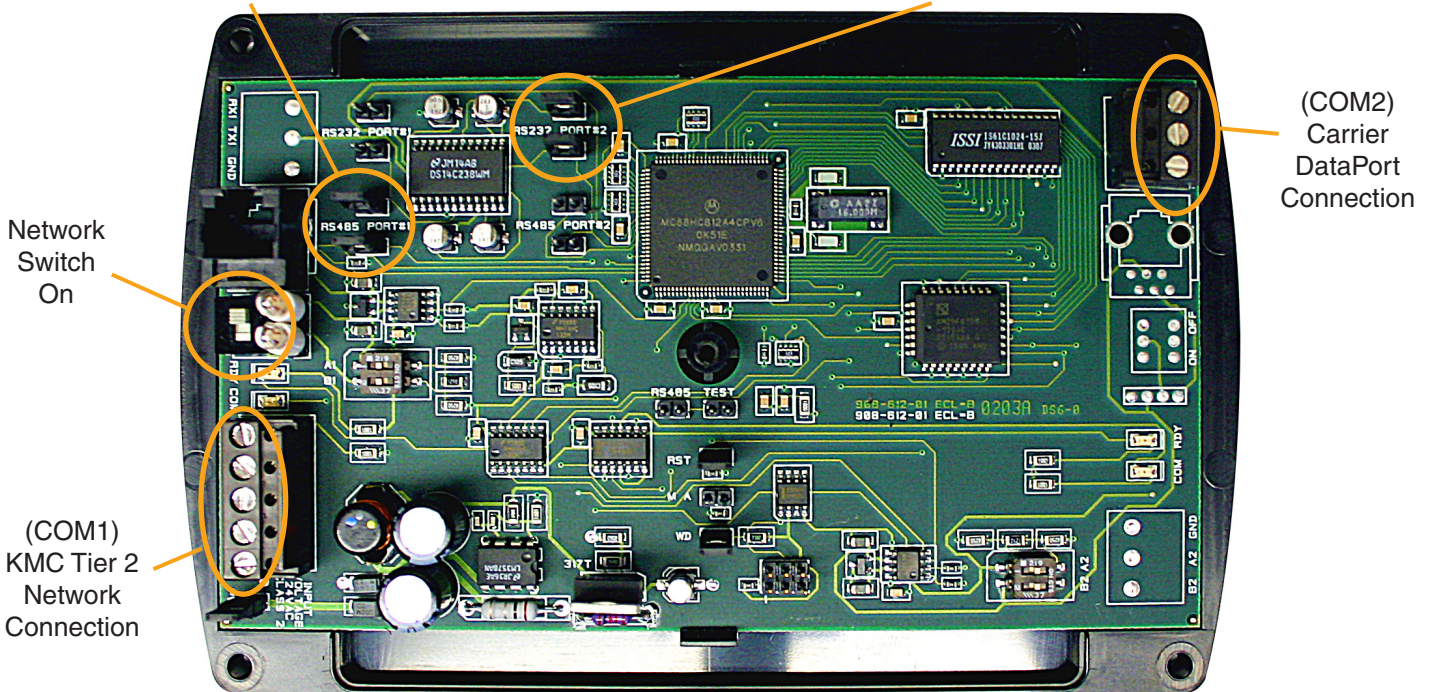


Jumper Configuration:

1. Ensure the COM1 (left side) jumpers are in the default setting for EIA-485 (formerly RS-485) communication.
2. Ensure the COM2 (right side) jumpers are in the default setting for EIA-232 (formerly RS-232) communication.
3. Turn the network switch On.

EIA-485 Communication Jumpers (Default) Setting

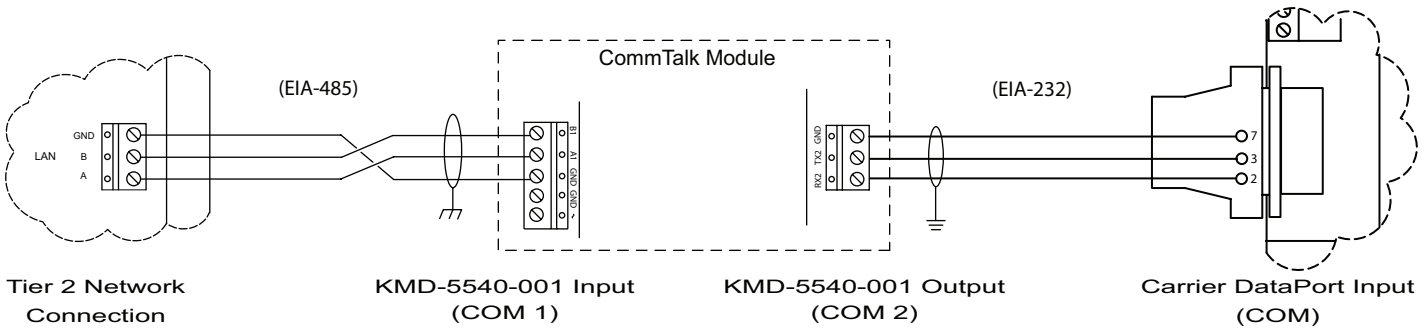
EIA-232 Communication Jumpers (Default) Setting



NOTE: A slow, intermediate flash (approximately five second intervals) on the COM LED indicates requests by the KMD-5540-001 are not being answered. A rapid, constant flash indicates normal data exchange.

Wiring:

As shown below, DataLink Terminal 3 connects to KMD-5540-001 (COM2) Terminal TX2, Terminal 2 connects to Terminal RX2, and Terminal 7 connects to GND.



Carrier DataPort Register Definitions in WinControl Variables:

Using WinControl, program the Variable **Descriptions** using the following format:

a. **A-XXXXXXXX**

- 'A' represents the Carrier Controller as set up in the CCN DATAPORT configuration table. This value can range from 'A' to 'O'.
- 'XXXXXXXX' is the eight-character **point name** as set up in the Carrier Controller. Enter only as many characters as in the point name.

NOTE: A dash "-" must precede the point name.

b. Close the Variable screen to send the new information to the panel.

NOTE: Wait approximately 15 to 30 seconds (depending on how many Carrier Controllers the DATAPORT is connected to).

c. Reload the descriptors and the Variable screen. The CCN points should appear with up to 10 characters of their description, values, units (if applicable), and auto/manual status.

Operating Notes:

- The DATAPORT's baud must be set at **9600** bps. The CCN controllers from which the DATAPORT can transmit data must be specified in the DATAPORT's configuration table. The DATAPORT must be configured to load the desired points from the CCN. This is all accomplished via Carrier software.
- This device is based on the design of the KMD-7000 series controllers. Its default address is set to 124 with the baud at 19200. These settings may be changed with HCM software.
- This panel will act like a 4X4 (KMD-7000 series) on the KMDigital network. There are no physical Inputs or Outputs. This particular version does not have NetSensor capability.
- This panel will NOT accept Control BASIC programs sent from the InControl software. Control BASIC programs must be sent with WinControl XL or WinControl XL Plus.
- The network switches and bulbs apply only to EIA-485 communications.

KMC Controls, Inc., 19476 Industrial Drive, New Paris, IN 46553
574.831.5250, www.kmcccontrols.com, info@kmcccontrols.com