

KMD-5540-004 McQuay Interface

Issued April 18, 2005

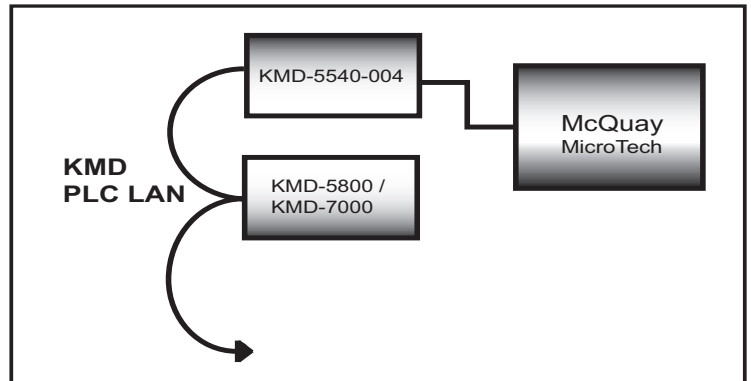
Issue

Setup and configuration of the KMD-5540-004 McQuay Interface.

Instructions

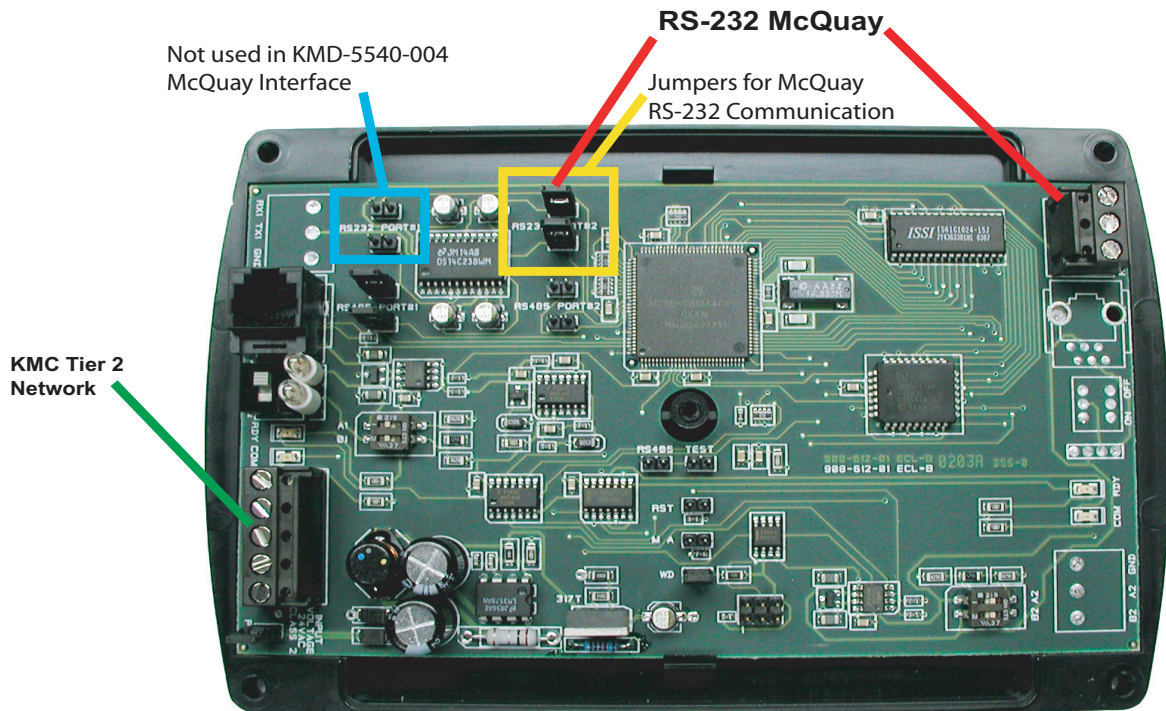
This version of the KMD-5540 Series CommTalk is designed to act as a KMD Tier 2 controller and interface between a KMD series controller on the KMD Tier 2 network, and a 3rd party device.

NOTE: *McQuay requires WinControl2 build 1.8.5 or greater to configure interface.*



Jumper Configuration:

Configure for Communication on COM1 (left side of board) and COM2 (right side of board) The KMD-5540-004 communicates via a RS-232 by installing the appropriate internal jumpers. Jumpers must be set to RS-232 communication for proper connection to the McQuay device.



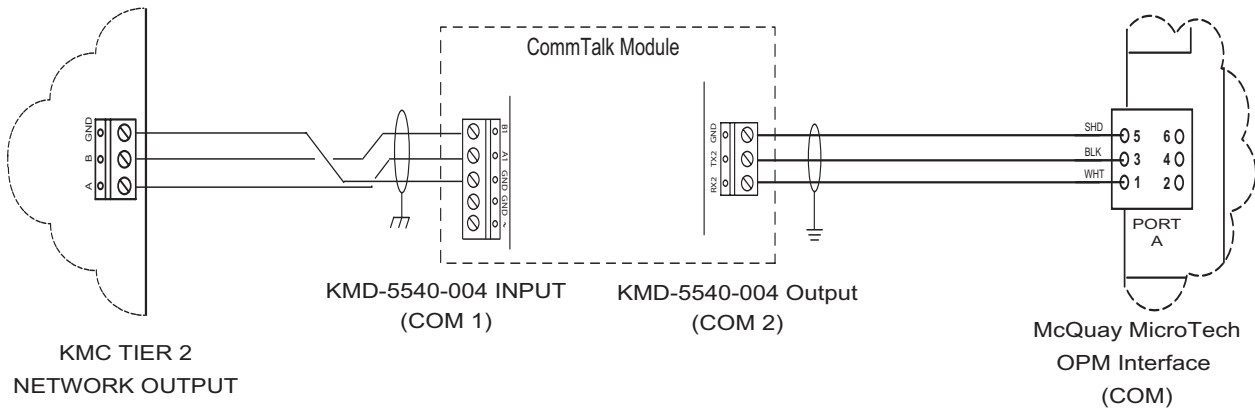
KMD-5540-004 McQuay Interface w/Cover Removed

NOTE: *A slow, intermediate flash (approx. 5 second intervals) on the Com LED indicates requests by the KMD-5540 are not being answered. A rapid, constant flash indicates normal data exchange.*

Hardware Connection:

Wiring for RS-232 communication.

- ◆ Terminal 3 at the McQuay device connects to the TX2 terminal.
- ◆ Terminal 1 connects to the RX2 terminal on KMD-5540-004 (COM2).



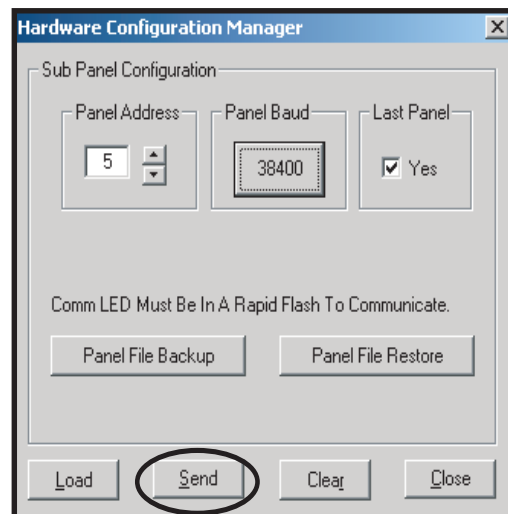
Hardware Configuration Manager Setup:

NOTE: Before you begin the next steps, you need to know the controller address and the baud rate for your application.

- 1) Open HCM to Address and Configure the Interface.
- 2) Direct connect to the KMD-5540-004 with HCM.
- 3) Set Address of device (use last panel if necessary by checking box)

NOTE: Remember your **Panel Address** number. It will be needed in Step 4 to confirm the panel has loaded.

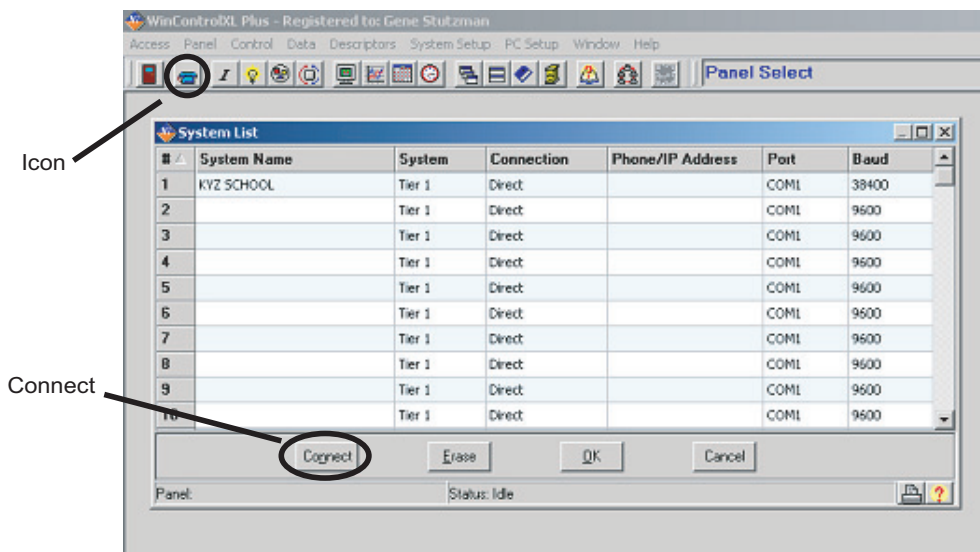
- 4) Click the **Panel Baud** button to set the network speed
- 5) Click **Send** to store the changes.



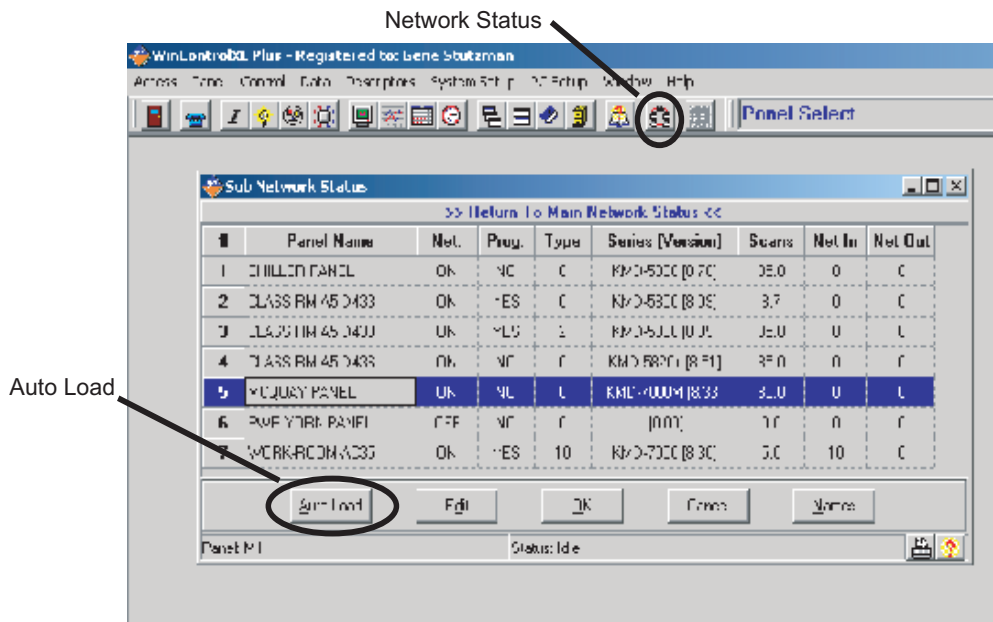
McQuay Registers Installation:

You must obtain an .mcq file of McQuay Registers from KMC Controls Technical Services and use WinControl to link to the registers.

- 1) Open Windows Explorer and copy the *.mcq file to the appropriate "(job folder)".
e.g. "C:\Program Files\KMC\WCXL\"(job folder)"
- 2) Open WinControl and click the telephone icon in the *Tool Bar* at the top of the page.
- 3) Select your system by highlighting the appropriate row under *System Name* and click **Connect**.



- 4) To display the *Sub Network Status* click the network icon, then click **Auto Load**.



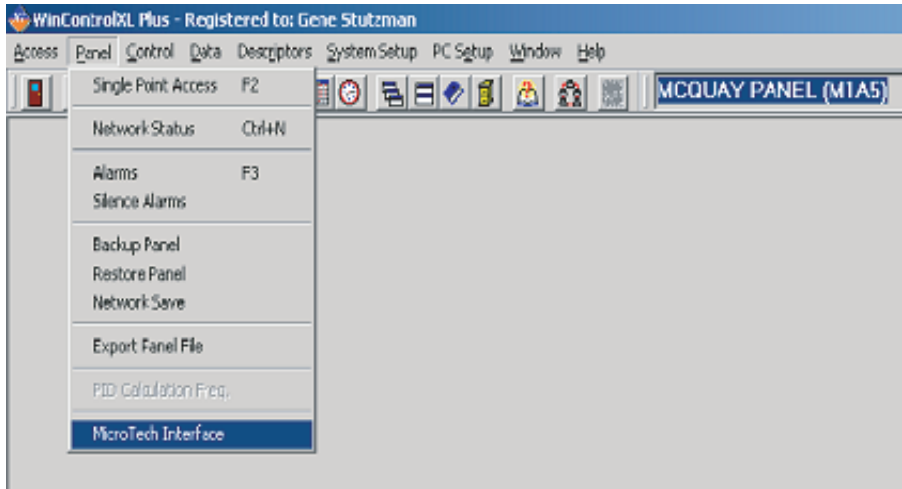
NOTE: The Sub Network Status is confirmed when your panel appears on screen in the appropriate row (# column matches the Panel Address number noted in Step 2 of the HCM setup) with "OK" in the network column (Net.)

5) Click your panel number in the first column. The window will disappear. You may now view and link McQuay points to KMD Variables.

NOTE: Alternatively, you may highlight the panel row and click **OK**.

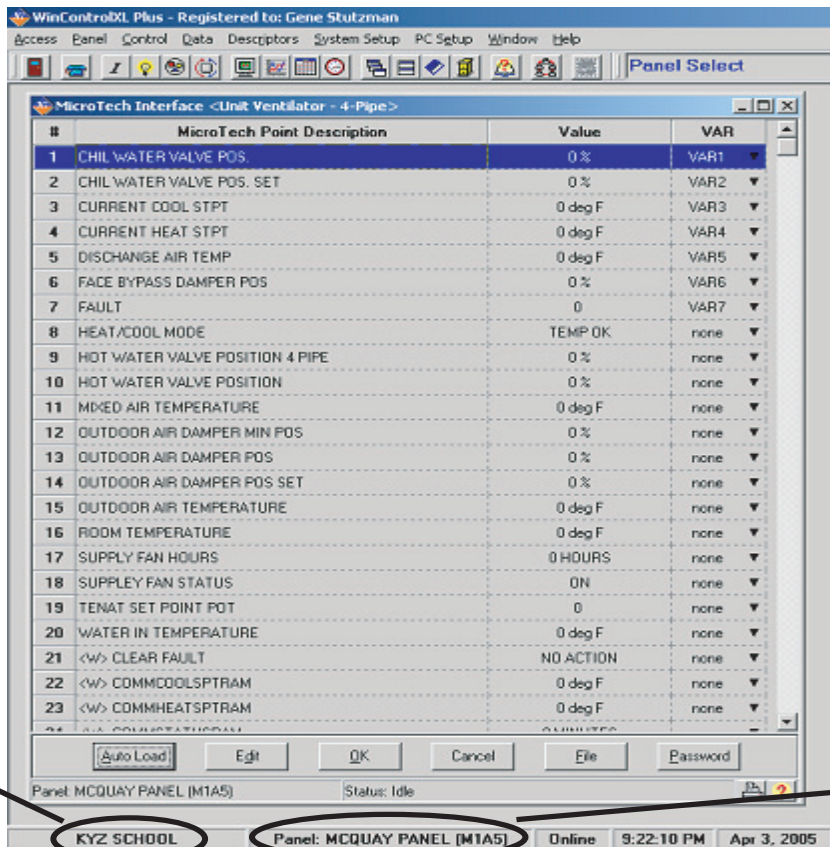
6) From the *Menu Bar*, click **Panel --> Microtech Interface**.

NOTE: *The first time you open the interface, a browser window will appear to help you locate the .mcq file. The browser window will also appear if the .mcq file is not in the "(job folder)". Once you locate the file, click **Select** then **OK**.*



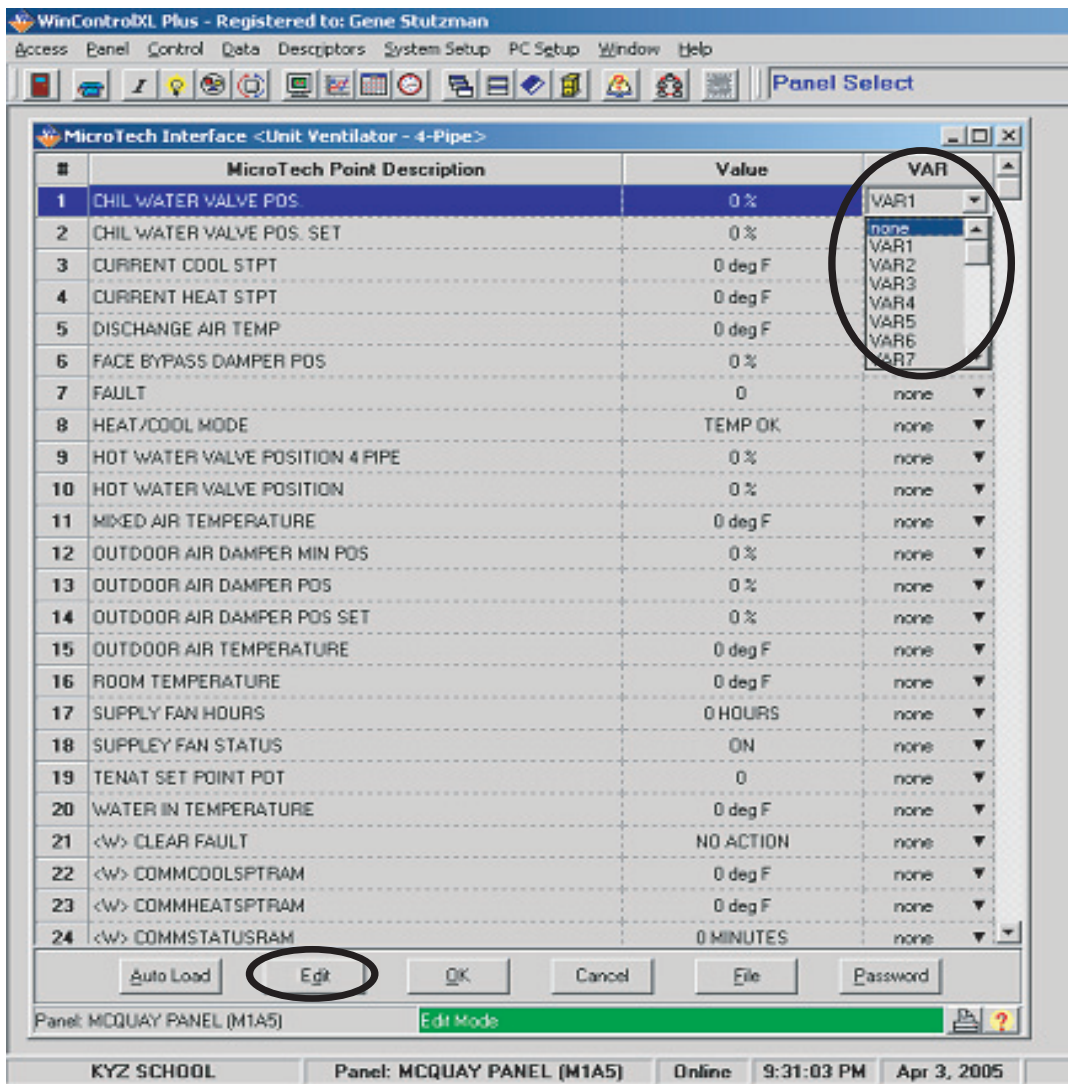
If the grid remains blank, you did not select the .mcq file. Repeat Step 6.

7) You can now view and link the McQuay points to the KMD Variables.



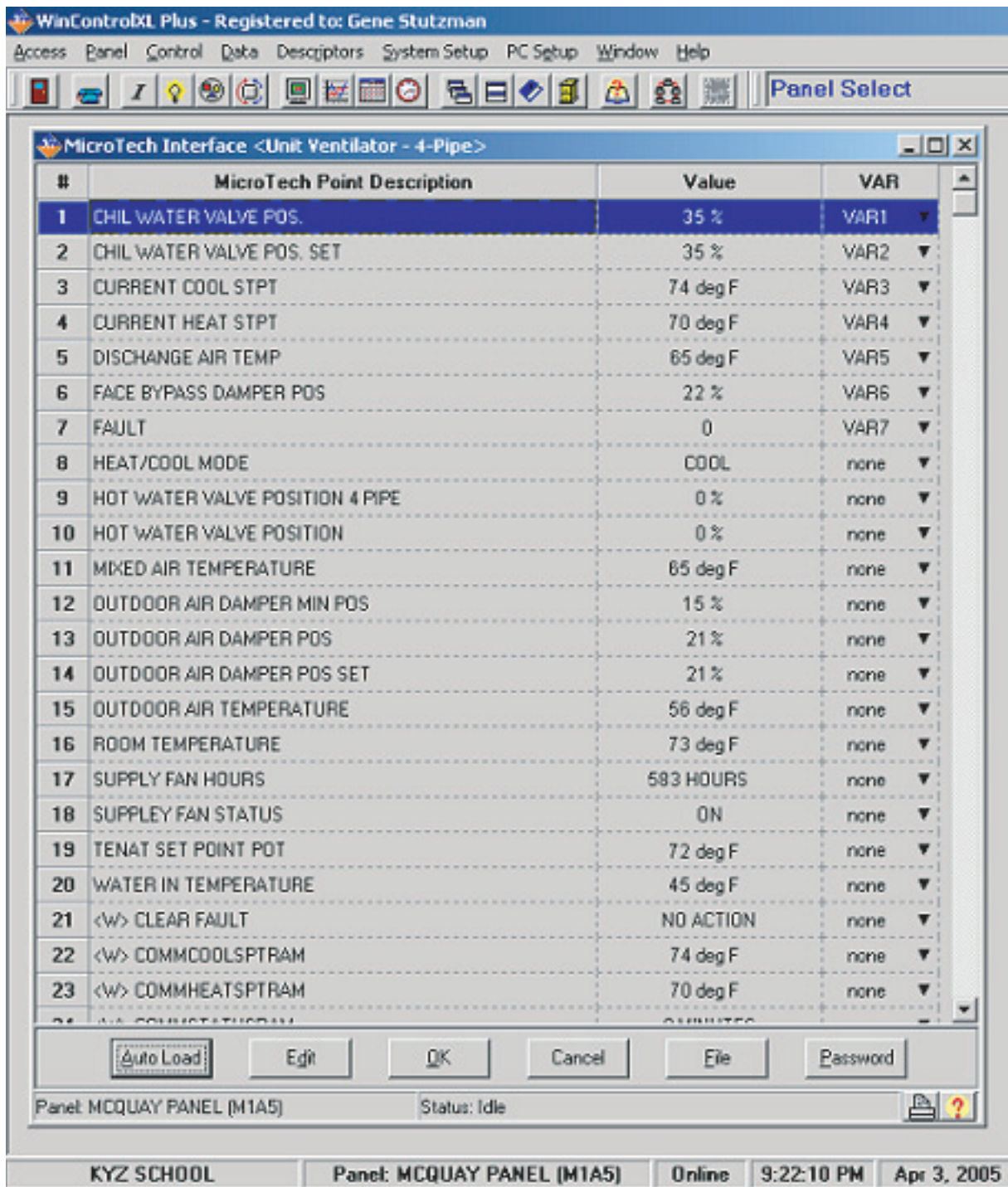
NOTE: *The Status Bar will confirm both the System and the Panel you are working on.*

- 8) Click **Edit**, then click on the drop-down box for each point. You can link up to 32 McQuay points to KMD Variables.



NOTE: As soon as you click the *Edit* button, it will change to *End Edit*.

9) Click **Password** and enter the password given to you by McQuay to load values.



9) Click **End Edit** or **OK** to submit links.

NOTE: If the values remain '0' check the following three items:

- ◆ Hardware connections.
- ◆ Confirm the McQuay Panel Address is set to 'FF' (This is set using the "HI" and "LO" hex switches on the McQuay interface).
- ◆ Re-confirm Password.