

Application and Description

The THE-1105 can be wall-mounted in vertical or horizontal installations for building automation systems requiring accurate monitoring of humidity and temperature. It transmits separate relative humidity (RH) and temperature signals for use in temperature, humidity, or enthalpy-based control applications. Environmentally rugged, it is suitable for hospitals, laboratories, and swimming pool areas.

This transmitter uses a silicon CMOS chip sensor (providing much more durable and reliable performance than older capacitive polymer sensors). It responds within seconds to changes in humidity with a very high degree of accuracy.

For humidity readings, the THE-1105 has two user-selectable output ranges: 0 to 5 or 0 to 10 VDC (scaled over 0 to 100% RH range).

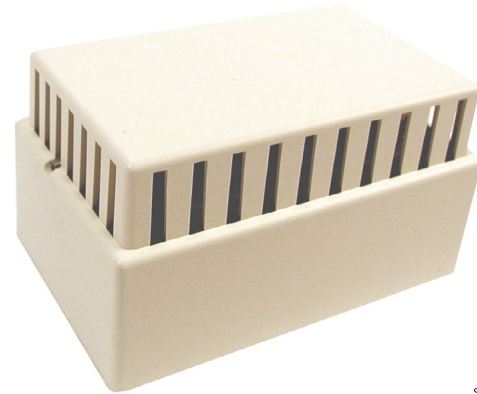
The THE-1105 also contains a thermistor for measuring room temperature. The Type II 10,000 ohm (@ 77° F) thermistor provides precise, stable temperature sensing.

Features

- ◆ Transmits separate temperature and humidity signals
- ◆ CMOS chip humidity sensor provides excellent linearity, sensitivity, and reliability with user-selectable output ranges
- ◆ Type II 10,000 ohm thermistor for temperature sensing
- ◆ Light almond (HPO-1501) cover (included)
- ◆ Can be mounted on a 2 x 4 electrical box (using an HMO-50xx mounting plate kit) or to a hollow wall (using an HMO-5001 or HMO-5023—see the Accessories section)

Specifications

Supply Voltage	24 VAC (-15%/+20%), Class 2 Only
Supply Power	0.84 VA at 24 VAC



Humidity Element

Output Range	0 to 100% RH
Sensing Accuracy	±2% RH over the 10 to 90% RH range @ 77° F (25° C)

Output Signal

0 to 5 VDC or 0 to 10 VDC (over 0 to 100% RH), capable of driving 1000 ohms or greater

Temperature Sensor

Type	Type II thermistor
Accuracy	±0.36° F (±0.20° C)
Resistance	10,000 ohm @ 77° F (25° C)
NTC	4.37%/° C @ 25° C
Dissipation Constant	2 mW/° C

Wire Size

18 to 22 AWG with a max. 250-foot length

Material

Base	Black ABS
Cover	Light almond flame-retardant plastic

Weight

3.0 oz. (85 grams)

Approvals

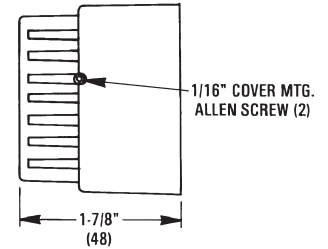
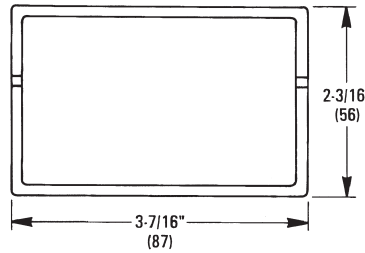
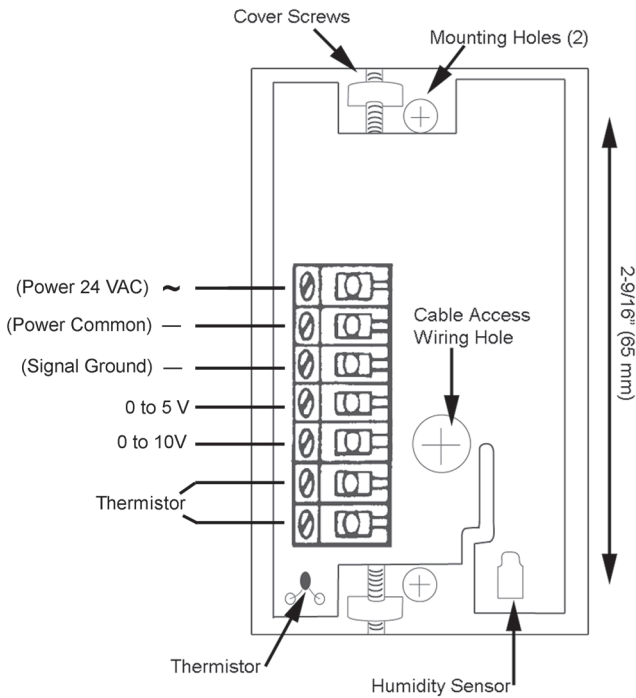
SASO PCP Registration KSA R-103260

Temperature Limits

Operating	40 to 120° F (4 to 49° C)
Shipping	-40 to 140° F (-40 to 60° C)
Humidity	0 to 100% relative humidity, non-condensing

Details

All dimension are in inches (mm).





Accessories

Covers (Replacement/Substitute)

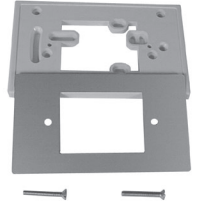
HPO-0044	Replacement cover screws	
HPO-1501	Replacement light almond ABS cover	
HPO-1502	White ABS cover	
HPO-1503	Brushed aluminum metal cover	

Mounting

HMO-5001	Dual toggle bolts for mounting on hollow walls	
HMO-5023	Mounting strap for mounting on hollow walls, includes 2 #6-32 x 2 inch screws and "template" printed on envelope	

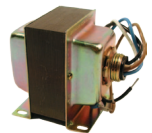
Mounting Plate Kits

(For mounting to 2 x 4 handy box, with screws and decorative matching plate)

HMO-5024	Light almond with aluminum trim	
HMO-5026	White with aluminum trim	
HMO-5030	Light almond	
HMO-5031	White	

Transformers (24 VAC, Class 2)

XEE-6111-040	40 VA, single-hub
XEE-6112-040	40 VA, dual-hub



KMC Controls, Inc.

19476 Industrial Drive

New Paris, IN 46553

574.831.5250

www.kmccontrols.com; info@kmccontrols.com