



# STE-9000 Series NetSensor Installation Guide

Complete the following steps to install a KMC Conquest STE-9000 Series Digital NetSensor connected to a Conquest BAC-59xx/9xxx Controller.



STE-90xx/93xx



STE-92xx/95xx

## CHOOSE SENSOR LOCATION

Refer to the [Room Sensor and Thermostat Mounting Location and Maintenance Application Guide](#) for cautions and best practices.

Refer to the [Conquest NetSensors STE-9000 Series Digital Room Sensors](#) data sheet and the [Conquest Selection Guide](#) for more information.

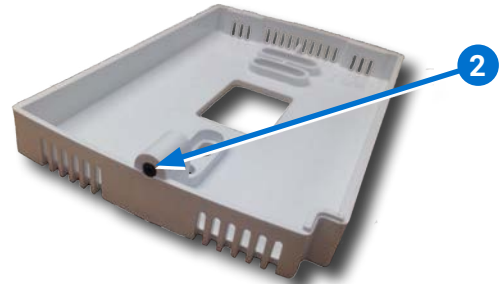
**NOTE:** Complete rough-in-wiring at each location before installing a sensor.

## REMOVE BACKPLATE

1. Turn the **hex screw** ① clockwise into the sensor to remove the backplate from the cover.



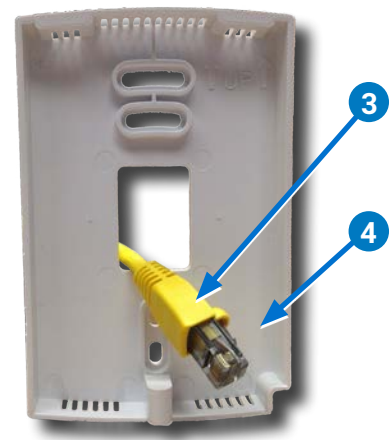
**NOTE:** The hex screw ② should remain in the backplate.



## CONNECT ETHERNET CABLE

2. Feed the **Ethernet patch cable** ③ from the Conquest controller through the center of the **backplate** ④.

**NOTE:** The Ethernet patch cable should be a maximum of 150 feet (45 meters).

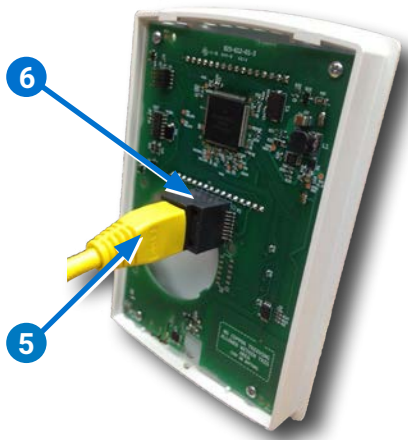


3. Install the backplate on an electrical box using the provided screws.

**NOTE:** If additional thermal insulation is needed, install the optional KMC **HPO-9002** gasket before installing the backplate.

**NOTE:** For more information, see the [Room Sensor and Thermostat Mounting Location and Maintenance Application Guide](#).

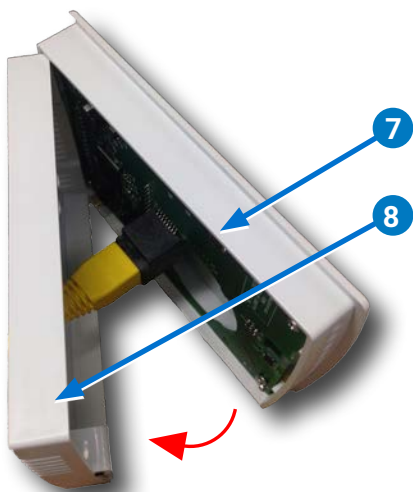
4. Plug the **Ethernet cable 5** into the **modular jack 6** of the sensor.



### INSTALL SENSOR

5. Place the **cover 7** over the top of the **backplate 8** and swing it down.

**NOTE:** Be careful not to pinch the Ethernet cable.



6. Turn the **hex screw 9** counterclockwise until it engages the cover.



### OPERATE

The STE-9000 Series NetSensor will become operational once it is connected to a powered Conquest controller.

**NOTE:** To change setpoints or configurations, refer to the **KMC Conquest Controller Application Guide**.

**NOTE:** For the STE-9000 Series NetSensor to operate at maximum efficiency, see the maintenance section in the **Room Sensor and Thermostat Mounting Location and Maintenance Application Guide**.

### IMPORTANT NOTICES



The material in this document is for information purposes only.

The contents and the product it describes are subject to change without notice.

KMC Controls, Inc. makes no representations or warranties with respect to this document.

In no event shall KMC Controls, Inc. be liable for any damages, direct, or incidental, arising out of or related to the use of this document.

The KMC logo is a registered trademark of KMC Controls, Inc. All rights reserved.

TEL: 574.831.5250  
FAX: 574.831.5252  
e-mail: [info@kmccontrols.com](mailto:info@kmccontrols.com)

