



Quick start guide

ecobee₃

Welcome to the hive

Thank you for choosing ecobee.

Do you hear that? That's the sound of hundreds of thousands of ecobee-ers welcoming you to our community. Now you can enjoy comfort where it matters and savings where it counts.

By purchasing an ecobee3 you're not just getting a cutting-edge smart thermostat, you're getting a complete home climate system that includes a free remote sensor, the ability to add up to 31 additional remote sensors, mobile apps, and lifetime access to personalized online tools.

We've made ecobee3 easy to install and intuitive to setup.

- Installation takes 45 minutes, on average
- It's as easy to install as a dimmer switch
- For step-by-step instructions, refer to the enclosed installation guide or watch our how-to videos at ecobee.com/HowTo
- Need more help? We're only an email or phone call away. support@ecobee.com | 1.877.932.6233

What's in the box?

- A ecobee3 thermostat with back plate and trim plate
- B Remote Sensor and stand
- C Power Extender Kit (optional)

- D Large trim plate
- E Screws and drywall plugs
- F Information booklets
- G Double-sided adhesives



A



B

C

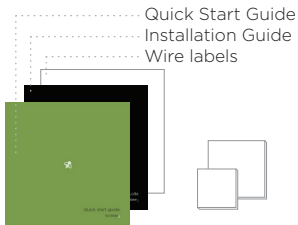


D

Cardboard Insert
(Remove before
assembling)



E



F

G

Guided setup

The first time you turn on your ecobee3, it will walk you through the setup process below and make sure everything is connected and working properly.



Verify wiring

ecobee3 automatically detects wires connected to the terminals.



Confirm accessories

If you have any connected accessories, ecobee3 will detect and help you configure them.



Set your preferences

Choose Fahrenheit or Celsius, set your thermostat to heating or cooling, and name your thermostat.



Connect to wi-fi

ecobee3 automatically detects nearby wi-fi hotspots. Simply select your network and login.



Register for mobile access

Register on ecobee.com with the code provided by your ecobee3 to remotely access your thermostat via smartphone, tablet or desktop.

Get to know your ecobee3

1. System mode (heat/cool/auto/off)
2. Indoor humidity
3. Indoor temperature
4. Motion sensor
5. Menu
6. Live weather
7. Quick changes
8. Slider to adjust temperature



Activating your remote sensor

Ordinary thermostats only read the temperature in one location. ecobee3 uses multiple temperature readings from remote sensors to deliver comfort more reliably.



Stand in front of your ecobee3 and pull the plastic tab on the remote sensor to automatically pair it with your thermostat.

Follow the prompts to name your sensor and establish your preferred options:

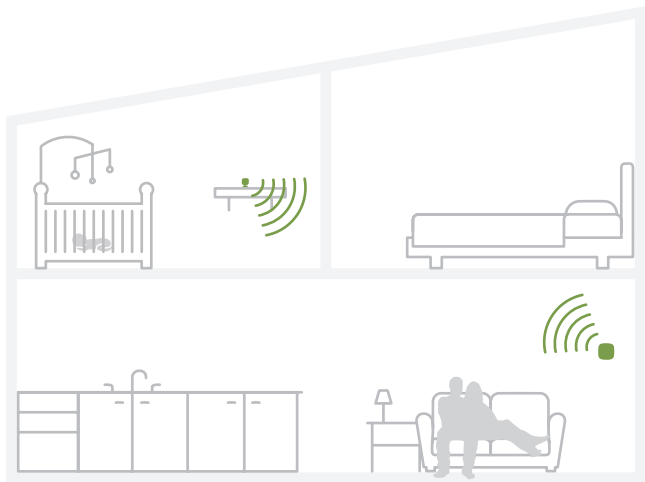
Smart Home/Away

If ecobee senses that you are home during your scheduled Away period, or away during your scheduled Home period, it will automatically override your schedule to maximize comfort and savings.

Follow Me

Control your comfort by averaging the temperature of the selected sensors that detect motion (Enabled) or all of the selected sensors in your home (Disabled).


Placing your remote sensor



- ✓ Place remote sensor at a height of approximately 5ft (1.5m)
- ✓ Mount on an interior wall or use the stand to place on a shelf for accurate temperature readings
- ✓ Avoid placing in areas with direct sunlight
- ✓ Is **Smart Home/Away** enabled? Place remote sensor in a high-traffic area

Quick tips



Can I manually switch between home and away?
Yes you can! Press the quick changes button  and easily switch between home and away.





How do I change my schedule?
Press the menu button , select schedule  and change your schedule.



How do I control my fan?
Press the quick changes button  if you want to turn on the fan to circulate air.



How do I switch between heat and cool?
Press the menu button , select system , and select HVAC to switch between heat and cool.

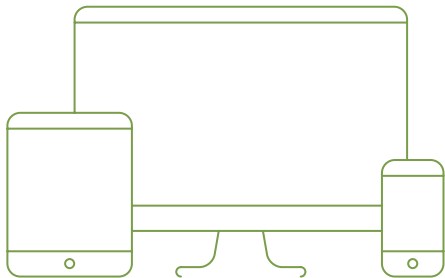


Where can I find more information?
To learn more about ecobee3, visit our online user guide at ecobee.com/Support/ecobee3

ecobee3: anytime, anywhere

By registering your ecobee3, you can monitor and control your home climate anytime, from anywhere, using a smartphone, tablet, or desktop.

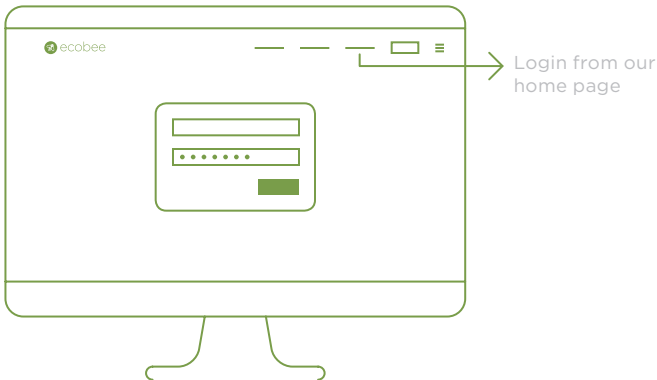
Register ecobee3 using your smartphone app or at ecobee.com to get started.



Always in the know with Home IQ

Home IQ provides a free monthly report, making it easy to track your heating and cooling usage, estimated energy savings, and more.

Available only on ecobee.com when you log into your secure account.



See how other people are using their ecobee, and share your own experience with us online.



Message us on Facebook
fb.me/ecobee



Tweet #ecobee3
[@ecobee](https://twitter.com/ecobee)



Send us an email
hello@ecobee.com

Can't wait to hear from you!



We're here to help

ecobee.com | support@ecobee.com | 1.877.932.6233



[@ecobee](https://twitter.com/ecobee)



fb.me/ecobee